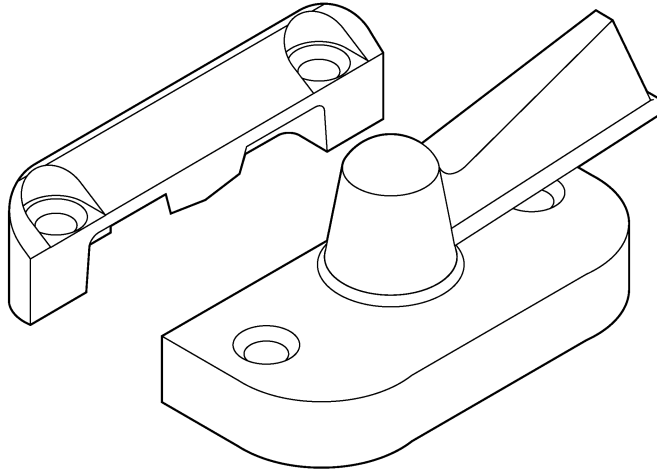


217 FLUSH MOUNT SASH LOCK



Single Hung **D**ouble hung



DEAL is happy to introduce its foray into single/double hung sash locks with an esthetically pleasing flush mount sash lock.

This lock is recessed into the sash to conceal all the locking mechanism. This gives the window a very clean look and protects the moving parts from dust and dirt. It also allows the use of window grills, divided lights, mutton bars etc. into the window without the need to notch them.

This petite flush mount sash lock comes with a special double dented, leaf spring design with click feel. This spring gives the lock a firm and crisp click that does not deteriorate over time.

This lock uses a cam that pulls the sash together 0.125" and lifts the two sash close by 0.156". Various colors and keepers are available. If we do not have a keeper we can tool up for your requirements.

MATERIAL: Lock and keeper are made of high pressure zinc die-cast

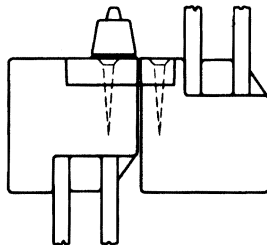
which is powder coated to resist weathering, chipping and flaking.

REPLACES: Truth 17 series petite flush mount check rail lock.

ORDERING INFORMATION: Choose type of feel required 217-052 Click feel & 217-152 spring back feel. Choose the color and keeper required.

If you need special keeper, please contact us at our sales office. Address is given on the back of the brochure.

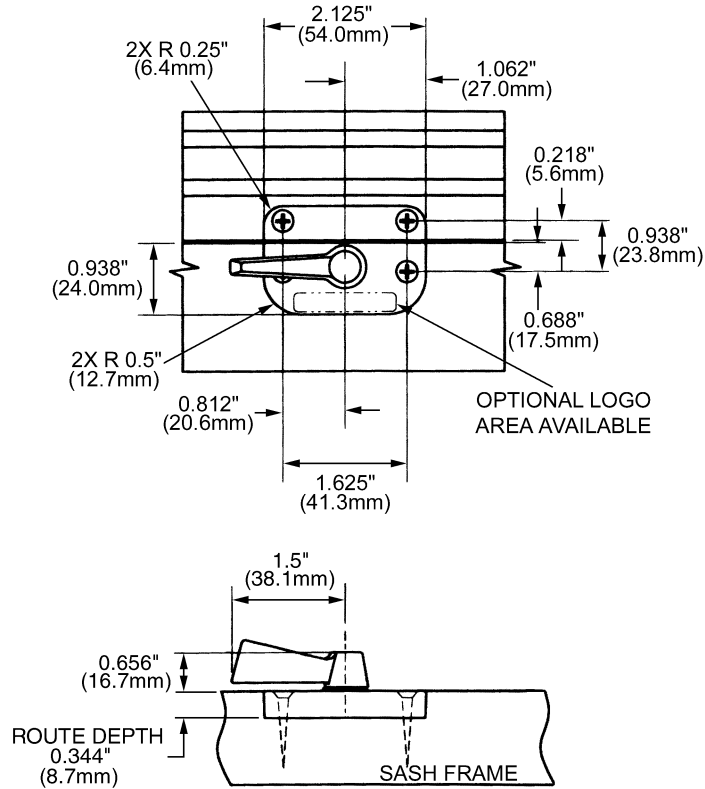
APPLICATIONS:



Single or Double hung window application (wood or vinyl)

217 FLUSH MOUNT SASH LOCK

FIG.1 PETITE FLUSH MOUNT SASH LOCK - 217-052 & 217-152



RECOMMENDED SCREWS:

WOOD WINDOWS: 2 - #6 Phillips, flat head, shank slotted, sheet metal screws.

VINYL/METAL WINDOWS: 2 - #6 Phillips, flat head screws. Length to be determined by vinyl profile.
Screw has to pass through two vinyl walls.



P.O. Box 10088; Rochester, NY 14610; USA
Toll free: (888) 880-DEAL (3325)

(c) 2001 DEAL International Inc. All rights reserved.
Suggestions of use should not be taken as inducement to infringe on patents. All specifications are subject to change without notice.